



He nui te akoranga ki Waterlea Great learning happens at Waterlea

Hello, Kia Ora, Kia Orana, Bonjour, Talofa Lava, Taloha Ni, Bula Vinaka, Ni Hau, Namaste, Malo e Lelei, Deea awit, Sagutom, Fakalofa Lahi Atu, Dia daoibh, Sillaw, Huan Ying, Hola, Konichiwa, Guten Tag, Здравствуйте

Newsletter 20 August 2025

Important Dates

22 August	Tongan Language Week/MANA Assembly 11:15am
3 Sept	MOSA Interschool Rugby
5 Sept	Kahui Ako Performance OHS
9 Sept	Year 3-6 Cross Country
11 Sept	Student Led Conferences School closes at 1pm
18 Sept	Class/Individual Photos
19 Sept	Last Day of Term 3
6 Oct	First day of Term 4
13 Oct	Board of Trustees Hui 7pm (For new board)
24 Oct	Teacher Only Day School Closed

Uike Kātoanga'i 'o e lea faka-Tonga – welcome to Tongan Language Week. The 2025 theme for Tonga Language Week is Ko 'etau lea, ko e fe'unu ma-hu'inga ia ki he mo'ui 'a e Tonga - our language is a vital strand of our Tongan culture. Our tamariki will be learning about the Tongan culture this week and we have some performances planned later this week where we are hosting Tongan groups from Maangere College and Royal Oak Intermediate School.

Last Friday we ended our highly successful book week with our book character parade in the hall. It was a joyful, fun and colourful experience for adults and tamariki alike. See the amazing photos in this week's newsletter.

Paid Union Meetings (PUM)

The majority of our teachers belong to the teacher's union NZEI and their collective agreement expired in July. NZEI requires teachers to attend union meetings to discuss the government's offer of a 1% pay increase over the next 3 years. These meetings are held during school time and our teachers are attending union meetings next Wednesday afternoon. We are organising the school in such a way that we can keep the school open when these meetings are happening.



Book Week



Book Week



Amazing Achievement

Nico raced in Round 4 of the Auckland Intermediate / Secondary Schools winter cross country MTB series.

It was held at Totara Park, Manukau.

He was racing in the Under 13 division and was one of the youngest participants, so he was competing against boys, most of whom were bigger than him!

Nico finished 6th out of 29 - his best result achieved so far.

Whaanau and Waterlea School are very proud of him!



Rain's comin' down, but I'm feeling real fast,

Pedals are pumpin', ain't no time to last,

Zoomin' through puddles, splashin' all around,

Bike race, let's go, I'm the 6th fastest in town!

Took a hard turn, then I fell to the side,
Tyres lost grip, and I nearly cried.

Yeah, I fell down — scraped up and sore,
But I popped back up, still ready for more.

I came six place, yeah I'm pretty proud.

My parents on the side screaming so loud.

By Nico

Board of Trustees

Below is the election timetable for your kura for the 2025 triennial school board elections

PARENT & STAFF ELECTION TIMETABLE

CLOSE MAIN ROLL	Wednesday 16 July
CALL FOR NOMINATIONS	Friday 18 July
CLOSE SUPPLEMENTARY ROLL	Monday 4 August
NOMINATIONS CLOSE	12 noon Wednesday 6 August
VOTING PAPERS ISSUED	Wednesday 13 August
ELECTION DAY	Wednesday 10 September
CLOSE POLL	4pm on Wednesday 10 September
COUNT VOTES & DECLARE RESULTS	Tuesday 16 September
BOARD TAKES OFFICE	Wednesday 17 September

[Here is a link to a video update from the Board.](#)

Just a reminder you have three weeks from today to vote in the Board of Trustees Elections.

You have seven votes to nominate seven candidates. You can see the nominee profiles displayed in the Waterlea School Office.

The voting papers have been emailed to you so please check you inbox. Election Pilot, who are overseeing this election will send out paper copies of voting papers if you need them. Unfortunately the school office can't hold voting papers but are happy to help you if you are unsure.

Please contact them on election@electionpilot.nz

Phone: 0800868369



Student Led Conferences

Student Led Conferences

On **Thursday 11 September**, we will be holding our Student Led Conferences (SLC). Please note that school finishes early and **all children are to go home at 1.00pm on that day**. For those families that require childcare from 1.00pm that day, our before and after school care provider (sKids) is available. Please contact them directly on 027 240 0024 or admin@skids.co.nz.

SLC are an opportunity for students to lead a conversation about their learning at Waterlea. Each SLC lasts for 25 minutes and the teacher will also be available to answer questions during this time. The SLC start at 2.00pm and finish at 7.10pm and there will be 3-4 conferences happening at the same time within each classroom.

If English is not the language used in your home we invite you to conduct your child's conference in the language with which you feel most comfortable.

Booking a Time

Please visit the school interviews website to select a time that suits your family www.schoolinterviews.co.nz code: **bg6hk**

If you are not able to do this online, our office staff will be able to help you.

Please make your booking by Monday 8 September. After this date conference times cannot be changed electronically. To change conference times after this date please contact your classroom teacher, or the office.

As this is a time to focus on your child and their learning, we ask that if you are bringing other siblings along, that you make use of the child minding service in the library space between Rooms 6 and 7. If you intend to do this, please complete the google form by clicking on this link: [Child minding](#). If your child is in Room 21 the SLC will run differently because your children have only just started school. More information regarding booking will come home at the end of the week.



ATTENDANCE MATTERS

Attendance

After 6 weeks at school this term, our whole school attendance rate is 75%. Just a reminder about lateness and emailing principal@waterlea.school.nz if you are going away so these absences can be coded correctly for the Ministry of Education.

Responding to all absences

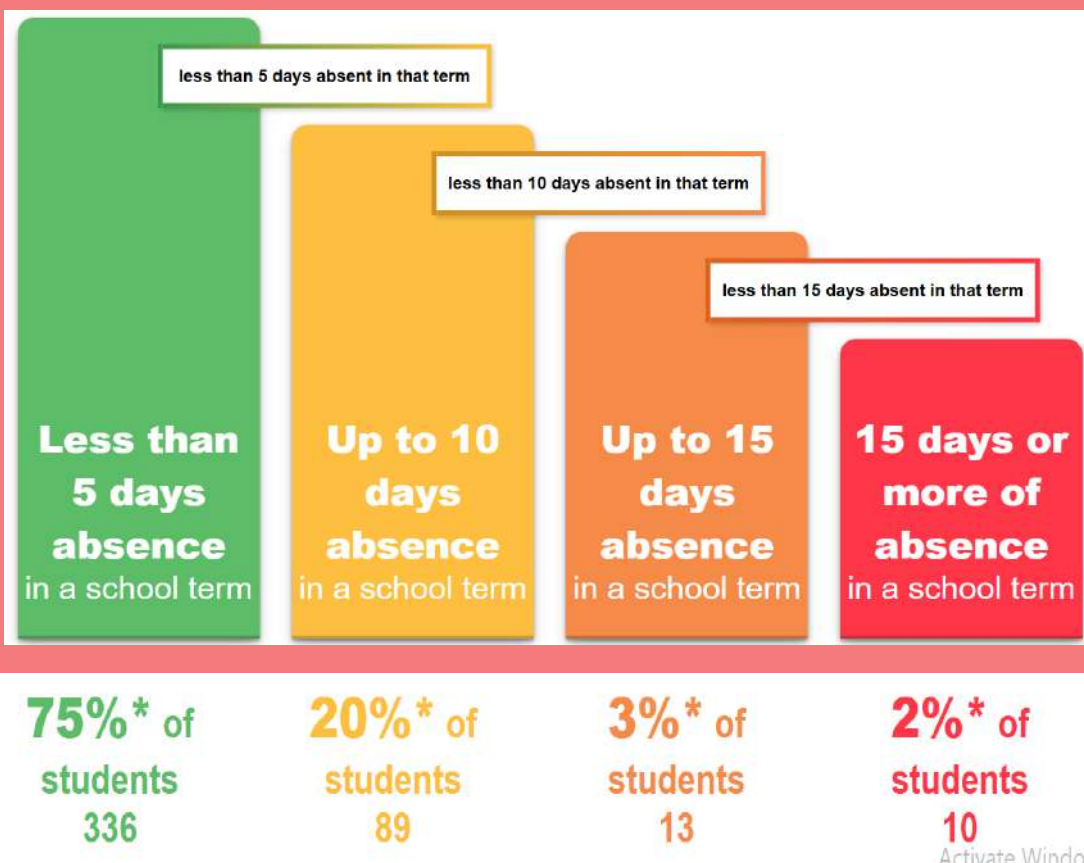
The Government's target is for **80% of students to attend regularly**, that is to attend school more than **90% of the time**.

GOOD
Good chance of success

WORRYING
Less chance of success

CONCERNING
Hard to make progress

SERIOUS CONCERN
Very hard to make progress





Ezlunch! - Now 5 Days a Week!

We're excited to share some tasty news with our Waterlea School family!

From Monday 25 August, school lunches are available **every school day** through Ezlunch — giving you even more choice when it comes to healthy, convenient lunches for your tamariki.

Here's what's on the menu:

- **Monday:** Four Square
- **Tuesday:** Four Square
- **Wednesday:** DailyLunch & Catering
- **Thursday:** DailyLunch & Catering
- **Friday:** Four Square

You'll find a variety of nutritious options to keep your kids fuelled and focused.

See Menus to follow

Together, we simplify school life — one lunch at a time.

Affordable. Healthy. Ready when they are.
Warm kai, happy kids.

The Ezlunch and Kindo Team

hello@mykindo.co.nz
support.mykindo.co.nz

ezlunch.



Order online by 9am
for delivery Mon. Tue. Fri

eZlunch MENU

Waterlea School / Term 3, 2025



310 Onehunga Mall
Onehunga
Auckland 1061
09-5582807

WARM MAINS

American Hot Dog	\$6.00
Teriyaki Chicken Steam Bun	\$6.00
BBQ Pork Bun	\$6.00
Ham & Cheese toastie	\$6.00
Cheese toastie	\$6.00
Macaroni Cheese	\$6.00
Bacon & Egg Muffin	\$6.00
Chicken tenders	\$6.00

COLD MAINS

Plain Croissant	\$4.00
Ham & Cheese Croissant	\$6.00
Chicken & mayo sandwich	\$6.00
Ham & cheese sandwich	\$6.00

SNACKS

Cheese & Cracker Dipper	\$2.00
Yoghurt Suckie	\$3.00
Blueberry Muffin	\$3.00
Chocolate muffin	\$3.00
Brownie Chocolate GLUTEN FREE	\$3.00
Donut	\$3.00
Fruit jelly cup	\$2.00
Fruit salad	\$6.00
Piece of Fruit - Banana	\$1.00
Piece of Fruit - Apple	\$1.00
Piece of Fruit - Orange	\$1.00
Pretzels	\$3.00
Popcorn	\$3.00

Order online... www.ezlunch.co.nz

Easily order & pay for your eZlunch using your 'myKindo' family account. MyKindo is a payment portal for a variety of services at schools and organisations. Your myKindo account can be topped up by debit or credit card (fees apply), or by bank transfer, in advance or at the time of purchase. To get started, 'create account' or log in to your existing myKindo account and add a member or student. Go to www.ezlunch.co.nz.

Need help? Visit support.mykindo.co.nz or call
toll free 0800 EZLUNCH (09-869 5200)
8am-4pm Mon-Fri (except public holidays)

Order online by 9am
for delivery Wed. Thur

eZlunch MENU

Waterlea School / Term 3, 2025



242 Manua Road
Mt Wellington
Auckland
09-579 5499

WARM MAINS

Macaroni Cheese	\$10.20
Tempura Prawn	\$8.50
Lasagne	\$10.50
Gluten Free Beef Lasagne	\$11.25
Gluten Free Macaroni Cheese	\$11.45
Sausage Roll - Baked Fresh Daily	\$5.60
Chicken Nuggets & Wedges	\$9.60
MEATBALL-Spaghetti with Meatballs	\$14.45
Fried Rice	\$8.60
Katsu Chicken On Rice	\$10.50
Teriyaki Chicken On rice	\$9.50
American Hotdog	\$9.70
Spaghetti Bolognese	\$10.50
Mild Chili Bean Nachos (large) with optio...	\$8.50
Spring Rolls	\$6.05
Jesters Pie-Billy T	\$8.50
Jesters Pie-Classic	\$8.50
Jesters Pie-Steak Cheese	\$8.50
Noodles - Vegetarian	\$8.05
Samosa Vegetarian 6pcs	\$4.70
Noodles - Chicken	\$8.70
Samosas - Vegetarian 12 pcs	\$8.60
Pork, Chive, Prawn Dumplings (4 pieces)	\$7.95
BBQ Pork Bun (Steamed)	\$7.65

COLD MAINS

Green Salad (design your own)	\$8.10
Roasted Chicken & Green Salad (design yo..	\$9.00
Katsu Chicken on Rice	\$10.50
Egg Mayo Sandwich	\$7.85
Chicken Vege Sandwich	\$8.05
Tuna Sandwich	\$7.65
Plain Ham Sandwich	\$7.85
Ham Sandwich	\$7.85
Vegetarian Sandwich	\$7.35
Teriyaki Chicken on Rice	\$9.50

SUSHI

SUSHI - Katsu Chicken 6 pcs	\$11.65
SUSHI - Katsu Chicken 4 pcs	\$7.95
SUSHI - Tuna Avocado 6 pcs	\$11.65
SUSHI - Tuna Avocado 4 pcs	\$7.95
SUSHI - Plain Teriyaki Chicken 4 pcs	\$7.95
SUSHI - Plain Teriyaki Chicken 6 pcs	\$11.65
SUSHI - Teriyaki Chicken with Avocado 4 pcs	\$8.15
SUSHI - Teriyaki Chicken with Avocado 6 pcs	\$11.95

SNACKS & DESSERTS

Blueberry Jelly	\$2.85
Lime Jelly	\$2.85
Kiwifruit	\$3.15
Fresh Sliced Pineapple	\$3.95
Chocolate Chip Cookie	\$3.95
Chocolate Cake	\$4.50
Yoghurt Large 225ml	\$5.10
Yoghurt Small 100ml	\$3.75
Fresh Fruit Salad	\$7.55
Apple	\$2.45
Orange Fresh & Quartered	\$4.00
Carrot Sticks	\$3.45
Pretzels	\$3.25
Vegetable Crisps	\$2.85
Popcorn	\$3.05

VALUE PACKS

Sushi Lunch Box	\$14.80
Bento Box	\$15.80
Sandwich Lunch Box	\$14.80

DRINKS

Natural Spring Water	\$2.95
----------------------	--------

Order online... www.eZlunch.co.nz

Easily order & pay for your eZlunch using your 'myKindo' family account. MyKindo is a payment portal for a variety of services at schools and organisations. Your myKindo account can be topped up by debit or credit card (fees apply), or by bank transfer, in advance or at the time of purchase. To get started, 'create account' or log in to your existing myKindo account and add a member or student. Go to www.eZlunch.co.nz.

Need help? Visit support.mykindo.co.nz or call
toll free 0800 EZLUNCH (09-869 5200)
8am-4pm Mon-Fri (except public holidays)

Sports Page

This term we have been fortunate enough to have Roi, Nolhan and Carter's dad, come and coach our year 5/6 boys and girls for the inter school rugby competition. Roi works for Auckland Rugby and plays rugby himself. The first session with him, we practiced our ball skills, moving into space, presenting the ball in a ruck and working as a team.

We are so lucky to have had this opportunity. Thank you, Roi!



Walking School Bus

On Monday we had two surprise special passengers join the Ambury Express, Walking School Bus! Barnaby and Wannabe, two lambs walked the route to school with us all. It was a fun 'sheared' experience!



For more information regarding joining the Ambury Express, please email amburyexpress@gmail.com.

Kahui Ako performance 5th September 5-7pm

Many of you will remember Waterlea tamariki performing on a Friday evening at Onehunga High School at about this time last year along with our other Kahui Ako Schools. Well, back by popular demand we are participating in this event again. This year we will take our Kapa Haka Group and our Ukulele Group. If your child is in one or both of these groups some further communication will come home in a week or so. The event is from 5 -7pm and we will be given a time when our tamariki will be performing. Pop the date and time in your calendars now!



From the PTA

Bust out of the winter funk and come and craft with us!

The PTA is hosting a Craft & Sip fundraiser on Thursday 4th September.

Tickets are \$30 each - which included a beverage, a craft activity, the chance to hang with others in our amazing community and support our school!

Delicious food and beverages will be available for purchase on the night (Eftpos available).

Gather your squad, rally the neighbours or treat yourself to a fun night out!

Sign up link here: https://docs.google.com/forms/d/e/1FAIpQLSc_BjyNmGV4ai-HR7e87hPSF8FsjXNNe95owzpKS83R7NEG8g/viewform?usp=sharing&ouid=106624559064483144900



**WATERLEA
SCHOOL**

Craft & Sip



**6.30pm - 9pm, Thur
4 September**

**Waterlea School
17 House Avenue**

**Tickets are \$30 each
(& include a
beverage)**

**Additional food &
beverages for sale**

Scan QR code to register



Creative Sparks

sKIDS

Have fun and build confidence through drama, storytelling and performance with Sparky!



EVENT HIGHLIGHTS

- ✓ Be the star of the show in talent shows
- ✓ Make your own amazing art
- ✓ Dance, move and groove
- ✓ Earn stickers to track your progress

Join us on Wednesdays in Term 3!

WED 27 AUG

DRAMA
-RAMA



WED 3 SEP

THE ART
LAB



WED 10 SEP

MOVE
& GROOVE



WED 17 SEP

THE IMAGINATION
LIBRARY



Spark your **creativity**
SCAN TO BOOK NOW



COLLECT YUMMY STICKERS AND GET SPORTS GEAR FOR OUR SCHOOL!

Collect the Yummy cut-out labels from bags (each cut-out label is worth 10 stickers) and individual Yummy apple stickers for Waterlea School's share of the \$200,000 free Sport sports gear prize pool.

Yummy apples are available from New World, PAK'nSAVE and participating Four Square stores. The more you collect, the more sports gear we can get so get going and start collecting your Yummy cut-out labels and stickers now!

All stickers/cut-outs along with your school's Total Tally Sheet must received by us by Tuesday 24 September.

[Download your sticker collection sheet here or pick one up at the office.](#)

