



# WATERLEA SCHOOL

*He nui te akoranga ki Waterlea Great learning happens at Waterlea*

Hello, Kia Ora, Kia Orana, Bonjour, Talofa Lava, Taloha Ni, Bula Vinaka, Ni Hau, Namaste,  
Malo e Lelei, Deea awit, Sagutom, Fakalofa Lahi Atu, Dia daoibh, Sillaw, Huan Ying, Hola,  
Konichiwa, Guten Tag, Здравствуйте

Newsletter 21 May 2025

## IMPORTANT DATES

21	May	Y4-6 Swimming Day
23	May	MANA Assembly 9:45am
26	May	New cohort start school
28	May	Y4-6 Swimming Day
2	June	King's Birthday School closed
2	June	Samoan Language Week
6	June	MANA Assembly 9:45am
16	June	Mid Year reports home
17	June	Teacher Led Conferences
18	June	Teacher Led Conferences School closes at 1:00pm
18	June	Scholastic Book Fair
20	June	Matariki - school closed
27	June	Hikoi & Breakfast
27	June	Matariki Assembly 9:45am
27	June	Last day of term 2

Last Friday we got a new outdoor Table Tennis set-up at Waterlea. This was generously presented to us by the Auckland Table Tennis Association, after our talented Year 6 writers bombarded them with some very persuasive letters!

Here is one example, which was a collaboratively written letter from Room 8.

Tēnā koe Dinyar

We are from Waterlea School in the friendly Māngere Bridge community. We are excited to have the opportunity to let you know how much we would love and use an outdoor table tennis table. This table would bring us joy and we could use it before school, after school and during our playtimes. Our whole school would use it as we are a very sporty school.

Last year everyone enjoyed watching the teachers versus students indoor table tennis tournament. It was, however, quite time consuming setting up and putting away the indoor tables. It would be wonderful to have a permanent table available for us to use.

An outdoor table tennis table could be a place where we make new friends. Families from our school community would be able to have games with their children before and after school. We would be able to play during our break times. It would give all of us the opportunity to socialise in a new way with others.

Waterlea students are very athletic. We are always active and having fun playing different kinds of sports at morning tea and lunchtime. Table Tennis is a sport that people can learn from watching others play and it is a calmer sport than some of the other sports we play. At times, many of us would love a more peaceful alternative.

As we have shown you, Waterlea School students and the wider community would benefit a lot from this awesome equipment. Thank you for the opportunity to give you our reasons why we would appreciate and get good use out of an outdoor table tennis table. Thank you also for taking the time to read our letter.

Your sincerely

The students of Room 8  
Waterlea School

**Tuesday 17 June (3:15 - 4:30pm)**

**Wednesday 18 June (1:30 - 7:30pm)**

## **Teacher Led Conferences**

The “Seekapong” initiative, that this table is now part of, is sponsored by Foundation North, Maungakiekie-Tamaki Local Board, The Lion Foundation and Four Winds Foundation. Download their app to find places you can play Table Tennis all around the city! More information [here](#)

Clearly, all of the letters we sent did the trick! Check out how much fun everyone was having...



# Teacher Led Conferences

## Teacher Led Conferences-Booking Information

On Tuesday 17 June (3:15 - 4:30pm) and Wednesday 18 June (1:30 - 7:30pm), we will be holding our teacher led conferences. School will close early on **Wednesday at 1:00pm**, children need to be picked up at this time, SKIDS are also available from 1:00pm.

In order to book a time, please go to [www.schoolinterviews.co.nz/code](http://www.schoolinterviews.co.nz/code) and enter the following code:

**uyxq9**

This interview is an opportunity for a parent/caregiver conversation with the classroom teacher. Where possible, please keep children at home. If you are unable to do so, we do have some availability for child care during the interview time. If this is required, please complete the following form - [child minding form](#)



## Staff News

It is with sadness that we farewell Sela Ahokovi from our Learning Support Team. Sela joined our team last year and did a wonderful job supporting some of our students with diverse needs. We wish her all the best in the future.

We also welcome Shubha Venkatrao who is teaching in Room 11 for Whaea Aroha Buchanan until the end of this term. Shubha will be teaching in Room 18 from the start of Term 3 when Marty Puketapu goes on maternity leave.



## **Bike Safety with Auckland Transport**

Here is a report from Room 8 about their Bike Safety sessions with AT- Go Bike NZ

We started off learning the rules for the day - firstly, have fun. Secondly, listen carefully and thirdly, let's learn together.

Janet was the lead teacher who was very ably supported by Shun and Toni. We did safety checks first which involved our footwear, clothing and hair.

While Janet was discussing those important things with us, Shun and Toni checked our bikes. The best thing about that is that Shun is a qualified bike mechanic, so he really knows his stuff.

We looked at helmet safety and everyone's helmet was checked. We looked at the ABCDS of bike safety.

A - Air. Squeeze the tires firmly to check correct inflation.

B - Brakes. Engage them to make sure both the front and back brakes are connected and working effectively.

C - Chains. Is everything connected as it should be?

D - Direction. Twist the handlebars to make sure it all moves as it should.

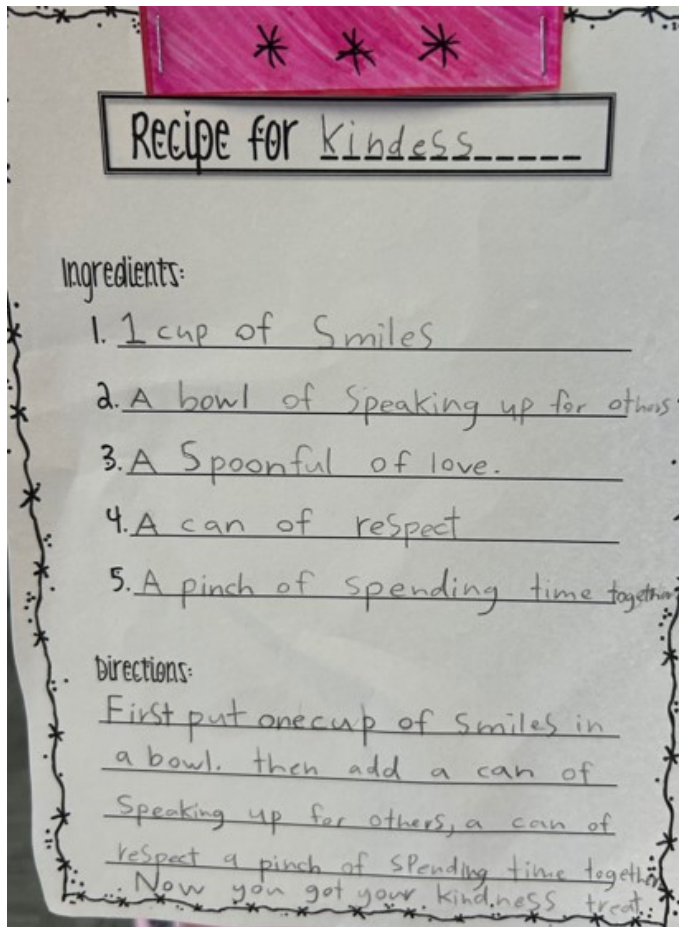
S - Seat. Adjust the height and make sure all the quick release levers are closed.

Today was about learning how to look around and how to stop. We played games to help us with that, like Red Light, Green Light. This first session set us up beautifully for the series of lessons ahead, a session filled with our Waterlea MANA values.





# Pink Shirt Day



What is Beats by Bingo?

Beats By Bingo is bingo with a musical twist - instead of numbers on your bingo cards it's song titles!

You can expect throwback jams, sing alongs, guilty pleasure tunes and some giggles.

Do I play in a team?

You play Beats by Bingo as an individual.

Though we have been selling tables of 10, we are selling individual tickets! Bring some mates or fly solo - you'll meet heaps of cool people from within our Waterlea community.

What are we fundraising for?

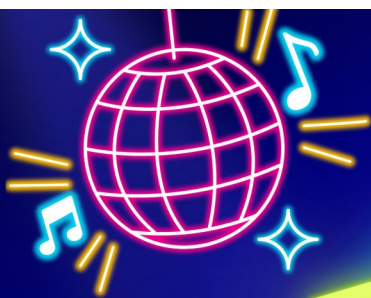
This year we are fundraising for the Mountains to Sea programme the school holds bi-annually for our Year 5 and 6 students.

It is run by the Conservation Trust, and its aim is to empower schools and communities by providing hands-on learning experiences in marine and freshwater environments.

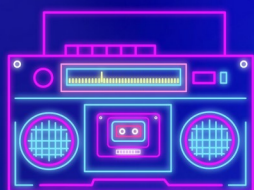




Proudly sponsored by:



# BEATS BY BINGO



From 6.45pm, Saturday 24 May 2025

## Waterlea School Hall 17 House Avenue

*Doors open for drinks at 6.45pm; Bingo starts 7.30pm*

*Individual tickets now available - \$40 per ticket.*

*Tables are \$400 for a table of 10. Tickets include entry and pizza delivered to your table.*

*Dress Up Theme: anything music!*



**Scan QR code  
to sign up for a  
fun night out!**





**Swimming Y 4-6 14 May - 25 June (Every Wednesday except 18 June due to TLC)**

- Please ensure you child brings togs and a towel
- If your child is not swimming please write a note for the teacher
- Parent helpers are welcome to meet at the pool

This is a fantastic opportunity provided free to our students at Waterlea School

**Wednesday's Swimming Timetable**

**Bus Pick up from SCHOOL**

Room 8	9:00am
Room 5	9:30am
Room 6	10:00am
Room 7	10:30am
Room 25	11:00am
Room 24	12:00pm
Room 10	12:30pm
Room 9	1:00pm

**Bus Pick up from POOL**

10:15am
10:45am
11:15am
11:45am
12:15pm
1:15pm
1:45pm
2:15pm







**Ages  
13yrs+**



**Register Now**

*Free*

# **SELF DEFENCE CLASSES**

**Sat 7<sup>th</sup> & Sun 8<sup>th</sup>  
June, 2pm-6pm**

Facilitated by  
MINDSET's professional  
instructors

Register online at:  
[www.mangerebridgevillage.co.nz](http://www.mangerebridgevillage.co.nz)

Sponsored by: Māngere Bridge Bus. Assoc.  
& Māngere-Ōtāhuhu Local Board

*Follow us!*



[facebook.com/waterleapta](https://facebook.com/waterleapta)



[instagram.com/waterleapta/](https://instagram.com/waterleapta/)



[waterleapta@gmail.com](mailto:waterleapta@gmail.com)

**WANTED**

We need items for our online auction at the Beats by Bingo event. All proceeds go towards supporting Waterlea school; donations are recognised on social media and newsletter. Email [waterleapta@gmail.com](mailto:waterleapta@gmail.com) if you can help!

# the SCIENCE ACADEMY

skids



Step into the lab with Professor Beaker  
for a wild science adventure!



## EVENT HIGHLIGHTS

- ✓ Get hands on with crazy experiments
- ✓ Make predictions and record your findings
- ✓ Earn stickers to track your progress



## CRAZY CHEMISTRY

Wednesday  
14 May



## EDIBLE SCIENCE 101

Wednesday  
21 May



## THE EARTH LAB

Wednesday  
28 May



Get ready to **EXPLODE** with knowledge!  
SCAN TO BOOK NOW



[www.looksharpstore.co.nz](http://www.looksharpstore.co.nz)

**LOOK SHARP STORE**



**LSM0265**

Unlock exclusive ongoing  
**10%** discount!

Simply save this QR code  
and scan at checkout  
**IN STORE ONLY**



## COLLECT YUMMY STICKERS AND GET SPORTS GEAR FOR OUR SCHOOL!

Collect the Yummy cut-out labels from bags (each cut-out label is worth 10 stickers) and individual Yummy apple stickers for Waterlea School's share of the \$200,000 free Sport sports gear prize pool.

Yummy apples are available from New World, PAK'nSAVE and participating Four Square stores. The more you collect, the more sports gear we can get so get going and start collecting your Yummy cut-out labels and stickers now!

**All stickers/cut-outs along with your school's Total Tally Sheet must be received by us by Tuesday 24 September.**

[Download your sticker collection sheet here or pick one up at the office.](#)



## SECONDHAND UNIFORMS

If you are after any secondhand uniform items, such as tee-shirts, polo shirts, skorts, shorts, or sweatshirts, please get in touch with the Waterlea PTA and we will do our best to help you find what you need.

All items are \$2, except the fleece sweatshirts which are \$10.



Gmail: [waterleapta@gmail.com](mailto:waterleapta@gmail.com) | Facebook: [@Waterlea PTA](#) | Instagram: [@waterleapta](#)