

WATERLEA WEEKLY



**Great Learning Happens at Waterlea by Connecting with
our Community, Culture, World and Future**

24 March 2021

Calendar

March:

25th PTA AGM 2.30pm (Hall)
26th MB Library Trip Rm 14
29th Interschool Softball
29th Board Meeting 7pm
30th MB Library Trip Rm 23
31st Interschool Softball Save Date
31st MB Library Trip Rm 15

April:

1st Whole School Assembly 11.30am
2nd Good Friday (School Closed)
5th Easter Monday (School Closed)
6th Easter Tuesday (School Closed)
7th Teacher Only Day (School Closed)
9th PTA Casual Clothes Day
9th MANA Values Whole School
Assembly 9.30am
14th Interschool Swimming
16th Remembrance Assembly for Ros
Barrball 2-3pm
16th Last Day of Term 1

May:

3rd Term 2 Begins
3rd New Entrant Cohort Starts

June:

7th Queen's Birthday Public Holiday
(school closed)
8th New Entrant Cohort Starts

July:

2nd PTA Matariki Disco
8th PTA Casual Clothes Day
9th Last Day of Term 2

**Hello, Kia Ora, Kia Orana, Talofa Lava, Taloha Ni, Bula, Ni Hau,
Namaste, Malo e Lelei, Deea awit, Fakalofa, Lahi Atu,
Vinaka, Dia daoibh, Sillaw, Hola, Huan Ying, Bonjour,
Sagutom, Konichiwa, Guten Tag, Здравствуйте**

On Wednesday, 7 April, 2021 after the Easter break, school is closed so all staff at Waterlea can attend a day of professional learning.

Waterlea, along with 10 other local schools, will hiko to explore and experience the stories of our Maunga (mountain), Moana (water) Manawhenua (land) and learn the connections between them. Our staff will travel on buses to experience our historical landscapes and the first stop will be Orakei Marae at Takaparawha Bastion Point where we will learn the history korero of Ngati Whatua. The next stop will be Maungakiekie and we'll be met at the top of the maunga to learn the history of the land and people there. After Maungakiekie we'll drive to Makaurau Marae, Ihumaatao to learn the history of Te Waiohira /Te Ahiwaru and our last stop will be a visit to Te Pane o Mataoho to learn the local history of our Maunga. Thank you in advance for supporting this day of learning for us all.

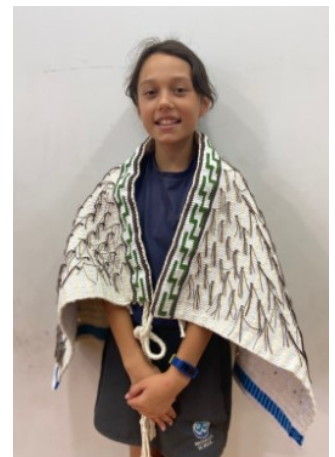
Last week we held our first MANA values assembly where we gave out our MANA certificates acknowledging our tamariki demonstrating our values.

We were lucky enough to have Whaea Angelique gift us a beautiful taonga last year. She made this korowai for our school which tells the story of our local area. As a new tradition in our MANA values

assembly, one student will have the honour of wearing the korowai. They are nominated by the teachers for showing these values across all areas of school life.

Our first recipient is Indee Sorenson from Room 8 (right).

Indee displays all of our school mana values, in many different ways. She demonstrates manaakitanga through her support of new students in her class where she is always positive and kind. She has shown ako through her teaching



of pepeha to our junior students and through being a buddy reading tutor. Indee shows Aumangea in her learning; she is always determined and keen to overcome challenges, and she demonstrates Ngākau Pono out in the playground, where her attitude around her peers is positive, respectful and honest. Ka pai Indee!

Don't forget to come along to the PTA's annual general meeting on Thursday at 2.30pm in The David Lange Hall. It will be a great way of learning about what's happening in this proactive whanau group.

Board of Trustees Policies- School doc

We'd like to invite you all to have input in the review of our homework/home learning policy on our School docs platform. You access School docs either from our website <https://www.waterlea.school.nz/our-people/bot/> scroll down on the Board of Trustees page and you will find the following log in details. Or you can follow the directions below:

For parents and caregivers ▲

If parents/caregivers are involved in this review, send them the following instructions:

1. Visit the website
<https://waterlea.schooldocs.co.nz/1893.htm>
2. Enter the username (waterlea) and password (waterleaway).
3. Follow the link to the relevant policy as listed.
4. Read the policy.
5. Click the Policy Review button at the top right-hand corner of the page.
6. Select the reviewer type "Parent".
7. Enter your name (optional).
8. Submit your ratings and comments.
9. If you don't have internet access, school office staff can provide you with printed copies of the policy and a review form.



Waterlea School PTA

AGM

Annual General Meeting

Everyone is welcome.
Stay informed and get involved.

- ❖ No obligation to join the PTA!
- ❖ Voting in a new Executive Committee!
- ❖ Come along to meet our members and see what we do for our school and our community!
- ❖ Volunteer opportunities, both large and small, available!

Thursday, 25th March
2:30pm - 3pm in the School Hall

TOMORROW!!!

Come at 2pm to meet the candidates
Coffee and light refreshments will be served

waterleapta@gmail.com | Find us on Facebook: Waterlea PTA

Illness

We have noted an increase of children being away due to gastro illnesses/tummy bugs. The Ministry of Health advises that children remain at home for 48 hours after their last vomit/diarrhea as it can be very contagious.

Head Lice

There have been a number of children across all year levels who have had cases of head lice. The tell-tale signs of your child having head lice are:

1. Lice and/or eggs living on the hair or scalp. Nits are light brown or grey in colour and oval-shaped. They are not easily removed from the hair because they are cemented to the hair shaft.

2. Itching. If your child has persistent itching generally on the scalp, behind the ears, or in the nape of the neck, the cause could be lice. Itching is caused by the skin's reaction to lice biting the scalp. Treatment need not be expensive. Further information on symptoms, treatment and prevention can be found at <https://www.health.govt.nz/your-health/conditions-and-treatments/diseases-and-illnesses/head-lice>

Easter Holidays and Teacher Only Day: School Closed 2-7 April

The days in April that school is closed - **2-7 April**.

2-5 April are public holidays

6 April is known as Easter Tuesday - while not a public holiday, all NZ schools are closed on this day.

7 April - Teacher Only Day

Skids will be available for childcare on Tuesday 6 and Wednesday 7 April.

Visit www.sKids.co.nz/book-with-us to book.

We look forward to seeing all our tamariki back in school on **Thursday 8 April**.

Lost Property... please check!

We have an overflowing collection of lost property located in the hall foyer. Please have a look to see if anything belongs to your child - there are all sorts there but in particular a number of nice shoes/sandals that we're sure somebody is missing! Please ensure your child's items are named and anything valuable is handed in to the office for safekeeping.

Community News

Southern Districts Hockey Club

Want to play hockey, if so come and join the Southern Districts Hockey Club. We are currently running muster sessions for all kids to give it a go. Year 1-4 Wednesday nights 5-6pm, Year 5-6 Thursday nights 5.30-6.30pm @ Kolmar Sports Centre in Papatoetoe.

We are keen to see lots of new players come down and play hockey and have secured funding for our 2021 fees to 50% discounted to support families during this tough time of Covid-19.

More information @ <https://www.kolmar.org.nz/sports-and-clubs/sports-clubs/southern-districts-hockey-club> or call Ken Maplesden 0277139335

• **FREE** •
**MID-WEEK RIPPA RUGBY
UNDER 6 + UNDER 7
BOYS + GIRLS**

2 Sessions per night 4:30 pm + 5:15 pm
Fri 26th March
Tues 30th March
Fri 9th April, Fri 16th April
Fri 23rd April, Tues 27th April
Tournament 1st May

For more info please contact our JRC: Scott Morrow 0212512802
or Email: manukaurugby@xtra.co.nz
We welcome you to register at any session from the above dates or
every Thursday 5pm - 7pm at one of our Junior club Registration nights.

Update from your Board of Trustees for Term 1 – 2021

Wow – although we have only been underway in this school year for a handful of weeks, it feels as though we have covered so much ground already. Now we are through the disruption of lockdowns and short weeks, I hope you are well back into the rhythm of life in our community.

I re-iterate my thanks to all of you who have put in extra effort to support your children and our community through this period. Thank you.

This will be my last newsletter update to you all as Chair of your Board of Trustees. This is my second 3 year term on this board and I have been in the role of Chair for the last 5 years. With around 18 months before the next elections for your Board of Trustees, we have decided to transition the chair mid term to provide more potential for continuity into the next elected term. It has been a pleasure and a privilege for me to be able to help out in our community in this capacity. Thanks for your support over the years. I will continue as a trustee until the next elections to assist with this transition.

So, with that said, it is my privilege to announce the appointment of Corinne Cameron as the new Chair of your Board of Trustees. Corinne was elected as a trustee in the last set of elections and has proven a very capable and hands-on trustee since joining us. She has been active and visible in the school community for a long time. We are very sure that she will hold the role well and oversee further progress for our school and community.

Property update –

An important part of the Board's role is to oversee the establishment and implementation of the property plan for the school. We have been working to finalise the plan for the next 10 years with the Ministry of Education for some time now and this plan is nearing completion. The content of this plan provides for some exciting new refurbishment work for us as well a plan around new learning spaces which we are in desperate need of.

The Board is not particularly happy with the delay in setting this new plan in motion or the Ministry's initial responses to our projections of future roll growth and the need for additional teaching space. Sadly, this means that some of our learners are housed in spaces that aren't specifically designated as classrooms i.e. the Library, the old hall and the cultural spaces.

We acknowledge that this is not ideal and thank you for rising to the challenge and working with us through this. Thanks to the extra effort of our staff and the Board's property sub-committee, our school now is on the Ministry's list for additional teaching space. We hope to have more progress in this space through the course of the next few months.

In closing, I thank you all for the support I have experienced as Chair of the Board for the last 5 years. Thank you to the staff team and the other board members who have done a great job progressing our shared objectives and vision for the school over this time. Thank you to all of you who have been caring and interested adults supporting our children's learning and our community.

Nga mihi



Andrew Dunning
(No longer the) Chair – Waterlea School Board of Trustees



Safe Kids In Daily Supervision

Waterlea School, Mangere Bridge

Holiday Programme

Term 1 2021

Full Day 7.30am to 6.00pm \$ 55

Trip Day 7.30am to 6.00pm \$ 70

Short Day 8.30am to 3.00pm \$ 37

Half Day 7.30am to 12.30pm OR 12.30pm to 6.00pm \$ 32

Mon 19th April

Backyard Birds

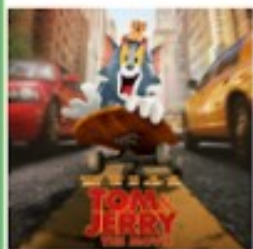
Spread your wings and get creative with DIY bird homes, macrame bird feeders, crafts, challenges and more!



Tue 20th April

TRIP: Tom & Jerry: The Movie

Everyone's favourite cat and mouse team bring their classic rivalry to the big screen in the animated comedy adventure, TOM & JERRY - only in cinemas.



Wed 21st April

Sensational Senses

Put your senses to the test today with blindfolded drawing, slime, putty and playdough creations, DIY harmonicas and challenges to test your knowledge of taste and smell!



Thu 22nd April

TRIP: Crystal Mountain

Explore the wonders of Mineral Crystals, journey through the exotic Animal Park on the express train and enjoy Mystery Mountains Indoor Playground!



Fri 23rd April

Spies & Detectives

Could you crack the code and uncover who stole the missing diamonds? How about write secret messages in invisible ink...? Find out today as we do all that and more!



Mon 26th April

Closed

Sorry, we're closed for ANZAC Day.

Take care and we'll see you tomorrow!



Tue 27th April

TRIP: All Blacks Experience

A state-of-the-art, interactive showcase of our Boys and Girls in Black. From the kick off to the final whistle, we learn the story of NZ's deep passion for our national sport.

GET IN QUICK!
LIMITED SPOTS AVAILABLE



Wed 28th April

Out of this World

Journey to a Galaxy far, far away today as we compete in astronaut training before learning how craters form and creating sun catchers, shooting star launchers and fizzing moon rocks!



Thu 29th April

TRIP: Kiwi Valley

Embrace your Inner Kiwi Farmer as we explore our Big Backyard (in Henderson!)

We feed animals, meet baby animas in the nursery, ride a pony and get lost in a Maze!



Fri 30th April

Dino Dash!

Roar, stomp and roar some more this Dino day! Today we're digging for dinosaur fossils and creating our own! Have fun with Fizzing Dino Eggs and tasty landscape cups!



Onsite: 027 240 0024
Head Office: 0800 274 172
waterlea@skids.co.nz

MSD-Approved
Work & Income OSCAR Subsidy available!
Book now at www.skids.co.nz/book

